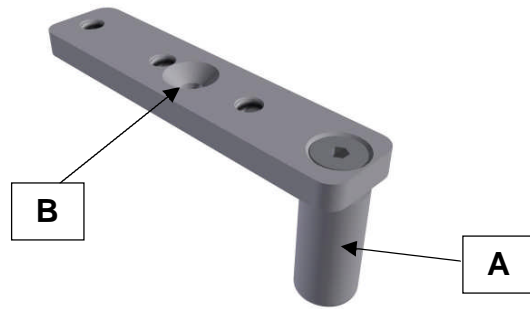




# RAYCAST® HIGH PRECISION BASE PLATE-TO-COUCH TOP FIXATION DEVICES UNIVERSAL TABLE CLAMP FOR PELVICAST™ BASE PLATES

## INSTRUCTIONS FOR USE

Article No. : **32160**



### A. GENERAL PRODUCT INFORMATION

The products referred to in these instructions are devices used to connect PELVICAST™ Base Plates from Orfit Industries to any type of couch top.

### B. PRODUCT DESCRIPTION

The universal table clamp is used to position a PELVICAST™ Base Plate on a couch top. It is not an indexing device.

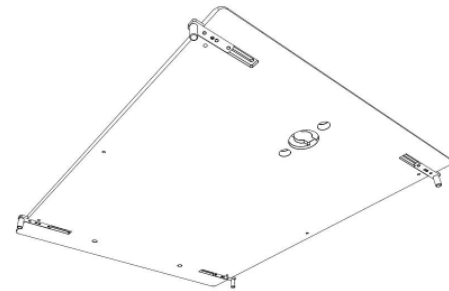
### C. PARTS LIST

Art. No.	Description
<b>32160</b>	<b>UNIVERSAL TABLE CLAMP (4 pcs.)</b>
containing:	
35744/10	Countersunk screw M5x10 (12 pcs.)
32031/2	Allen wrench 3 mm (1 pc.)

This product can be used on the PELVICAST™ base plates.

### D. FIXATION TO THE BASE PLATE

- Position the 4 pieces into the slots in the bottom of the base plate. The cylinder part must point downwards when the base plate is on the treatment table.
- The standard assembly of the cylinder clamping part is at position A (see above picture). Whenever the treatment table width requires a narrower fit, position the cylinder part at point B (see above picture).
- Screw in the bolts from the top of the base plate without fixing them. Use a minimum of 2 countersunk screws M5x10 to fix each clamp.
- Slide the clamps to maximum table width.
- Place the PELVICAST™ base plate on the treatment table and determine required lateral position.
- Slide the clamp to the sides of the treatment table and fix with the Allen wrench.



The base plate can now be moved freely in longitudinal direction and can be stored without removal of the clamps.

The clamps can cover treatment table widths from maximum 566 mm (22,28 inches) to a minimum of 406 mm (15,98 inches) depending on the position the cylinder is in. In position A the range is between 566 and 468 mm while in position B the table width can be between 506 and 408 mm.

### E. PRECAUTIONS FOR USE

- Be careful when putting the base plate with clamps onto the treatment table as the cylinder part may damage the surface in case of a collision!
- Use a minimum of 2 screws to fix a clamp!
- Use 3 screws whenever possible!
- Do not store the base plate in such a way that the clamping cylinders act as a support! This may cause upwards bending of the clamp!

### F. MAINTENANCE WASTE MANAGEMENT

This product can be cleaned and disinfected by means of soapy water or an isopropanol based disinfectant, applied with a soft cloth. If unsure about the cleaning fluid, do not use. **Never use aerosol sprays, corrosive cleaning agents, solvents or abrasive detergents.**

Periodic checks of the product should be done to insure the parts are not worn and require repair or replacement. **Do not attempt to make repairs yourself.** Contact your distributor if there are any questions or concerns. The product can be disposed of with household waste.

## G. ADDITIONAL INFORMATION

For additional information such as distributor contact information, product brochures, Material Safety Data Sheets and regulatory information, please visit our website [www.orfit.com](http://www.orfit.com).

These instructions were written in accordance with the European Directive 93/42/EEC for Medical Devices. It is prohibited to make alterations to this text without prior approval from ORFIT Industries.

RAYCAST® is a registered trademark of ORFIT Industries.



Ref.: 31931 – 32160.doc - version 3 - last update: 06/02/2008  
REVISION DATE: 06/02/2010



Listed with

