



and bolts. Other inserts are made from hardwood/epoxy.

This base plate is labelled 'MR Unsafe' due to the used metallic and carbon fibre materials. This is visualized by the following label:



### E.2 Mechanical Properties

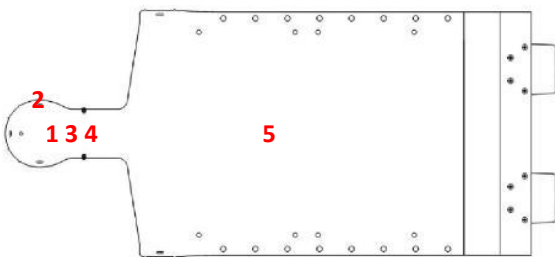
Max. allowed distributed load: 185 kg / 408 lbs



#### CAUTION

- Prevent point loads at all times!
- Do not lean or sit on the outer end!
- Have the patient sit on the pedestal area first and then slide towards the extension to lie down. Make sure the patient is never mounting on the base plate by sitting on his or her knees. This might damage the base plate.
- Make sure to take into account the weight of every item placed on top of the extension and add it to the patient weight to check that the total weight does not exceed the maximum load limit of the extension.

### E.3. Dosimetric Properties



The attenuation and skin build-up depend on the location on the base plate. The values given below are for photon therapy.

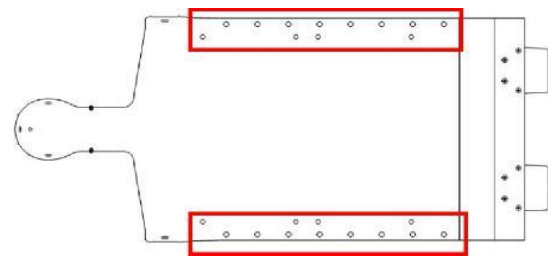
Location	Attenuation at 6 MV ( $\pm 0.15\%$ )	mm H <sub>2</sub> O equivalence ( $\pm 0.1$ mm)
1	0.98 %	2.2 mm
2 (with profile)	1.52 %	3.3 mm
3	0.81 %	2.9 mm
4	0.45 %	2.9 mm
5	1.07 %	3.5 mm

The water equivalence measured with protons is the following:

Location	mm H <sub>2</sub> O equivalence ( $\pm 0.1$ mm)
1	2.64 mm
3	4.10 mm
5	3.01 mm

The attenuation factor for high energy proton beams will be negligible. It is so small that it cannot be measured.

The Base Plate has areas where higher density ( $\pm 1.4$  g/mm<sup>3</sup>) materials have been used. The following image shows these areas inside the red lines. Attenuation factors at 6 MV of the non-metal inserts range from 8 to 10 %.



Note: Use these numbers as a guidance only. Perform the measurements again in your department to verify these results.

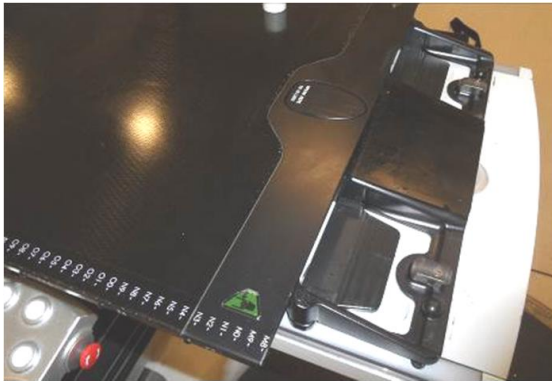
### F. ATTACHING TO COUCH

The extension 25000/20 is designed to fit the Civco Universal Couchtop™ with brown indexing blocks on the couch support.

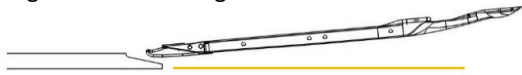
#### CAUTION

- It is not allowed to be used on another couch than specified in this document.
- Take into account any precautions and instructions described by the couch supplier.

Before carrying the extension, verify that the couch interface indexing blocks are mounted and screws are tightly fixed (see below picture).



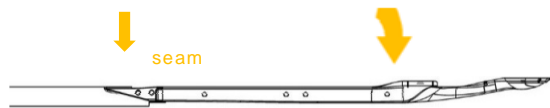
Insert the extension to the interface couch under a slight inclination angle.



Then slide the extension towards the couch until both the couch and extension upper edges meet.



Gently lower the extension until horizontal and the couch takes over the weight.



Verify that the extension is securely fixed by checking if it is flush with the couch (horizontal) and if there is a seam between couch and extension of about 1,5 mm.

#### G. ACCESSORIES FOR THE BASE PLATE

Various accessories can be used in combination with the HP PRO base plate, such as:

- 25000/6: Cranial Back Stop
- 25000/7: Head Support Indexing Plate
- 25000/17/A and 25000/17/B: Hand Holds

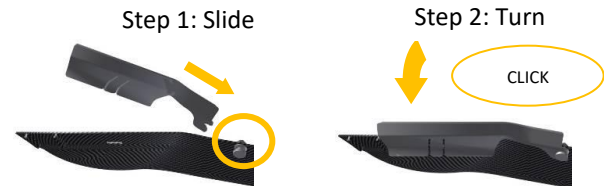
Information on these accessories can be found in the respective 'instructions for use' and on [www.orfit.com](http://www.orfit.com).

#### H. HP PRO THERMOPLASTIC MASKS

Various thermoplastic masks are available in a 3-points and 5-points version to immobilise head and neck patients.

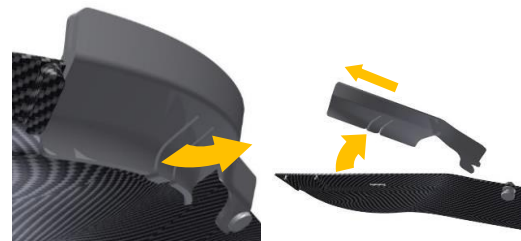
To attach the lateral head profiles to the base plate you have to work in a few steps. First slide the caudal side of the profile over the indexing pin and secondly swivel the profile inwards until it clicks over the base plate.

Attaching a lateral profile to the base plate:



Removing a lateral profile from the base plate:

Step 1: pull handle      Step 2: Turn & slide



The cranial head profile and the shoulder profiles simply click onto the base plate.

If the patient has medium to long hair it is helpful to add a hair cover. This will automatically clear the areas where the mask profiles must be attached.

It provides more time to mould the mask and prevents hair getting stuck in between the mask profile connection.

Different shapes and sizes are available both in Efficast and Nanor. The profiles are made from Polycarbonate (PC).

#### I. MAINTENANCE AND WASTE MANAGEMENT

This product can be cleaned and disinfected by means of an ethanol or isopropanol based disinfectant, applied with a soft cloth. If unsure about the cleaning fluid, do not use. **Never use aerosol sprays, corrosive cleaning agents, solvents or abrasive detergents.** Further cleaning instructions can be found in the [Orfit Cleaning Guidelines](#).

The product can be disposed of with household waste.

Periodic checks of the product should be done to insure safe use.

**Weekly:**

- No damages (cracks/dents) of any kind which might indicate a collision occurred.
- No visible defects on the aluminium adapter.
- All bolts still firmly in place.
- No delamination of carbon top and bottom layers.

Periodic checks of the following parts is extremely important in order to safeguard a good fixation of the mask to the base plate:

- The holes where the mask profiles click into.
- The guidance ribs to position the mask profiles.
- The pin to attach the inferior part of the profile to the base plate.
- The profile of the mask.

Immediately stop using the extension if a defect is found. **Do not attempt to make repairs yourself.** Contact your distributor if there are any questions or concerns.

**J. ADDITIONAL INFORMATION**

For additional information such as distributor contact information, product brochures, Safety Data Sheets and regulatory information, please visit our website [www.orfit.com](http://www.orfit.com)

**Note:**

It is prohibited to make alterations to this text without prior approval from Orfit Industries.  
EFFICAST<sup>®</sup> and HP PRO<sup>®</sup> are registered trademarks of Orfit Industries



**ORFIT INDUSTRIES**  
Vosveld 9A | B-2110 Wijnegem | Belgium  
T (+32) (0)3 326 20 26  
welcome@orfit.com

[www.orfit.com](http://www.orfit.com)



Ref. No. 50125  
VERSION 4  
LAST UPDATE: 02/04/2021  
REVISION DATE: 02/04/2023