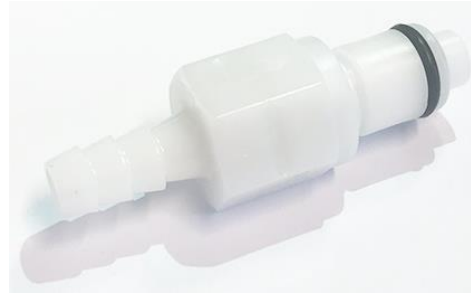


HOSE CONNECTOR FOR CIVCO VACUUM PUMP



Article No. : **18098**

A. GENERAL PRODUCT INFORMATION

The product referred to in these instructions is an adapter to connect Civco Vacuum Pumps with Orfit Orange Vacuum bags used for patient positioning and immobilisation in radiation therapy.

B. PRODUCT DESCRIPTION

This hose connector is used to connect Civco Vacuum Pumps with the Orfit Orange Vacuum Bags.

The thinnest part of the hose connector is attached to the hose that is delivered with the Orfit Vacuum pumps as shown in the picture below.



The thickest part of the hose connector with the black ring is attached to the Civco Vacuum Pump

Information on the other parts can be found in the respective 'instructions for use' and on www.orfit.com.

C. STORAGE

Always store the product in a safe place to prevent it from getting damaged.

Store the device between +10°C (50°F) and 40°C (122°F).

D. MAINTENANCE AND WASTE MANAGEMENT

This product can be cleaned and disinfected by means of an isopropanol based disinfectant, applied with a soft cloth. If unsure about the cleaning fluid, do not use. **Never use aerosol sprays, corrosive cleaning agents, solvents or abrasive detergents.**

Periodic checks of the product should be done to insure the parts are not worn and require repair or replacement. **Do not attempt to make repairs yourself.** Contact your distributor if there are any questions or concerns.

The product can be disposed of with household waste.

E. ADDITIONAL INFORMATION

For additional information such as distributor contact information, product brochures, Safety Data Sheets and regulatory information, please visit our website www.orfit.com.

Note:

It is prohibited to make alterations to this text without prior approval from Orfit Industries.



ORFIT INDUSTRIES
Vosveld 9A | B-2110 Wijnegem | Belgium
T (+32) (0)3 326 20 26
welcome@orfit.com

www.orfit.com



Ref. No. 50276
VERSION 1
LAST UPDATE: 17/01/2023
REVISION DATE: 17/01/2025