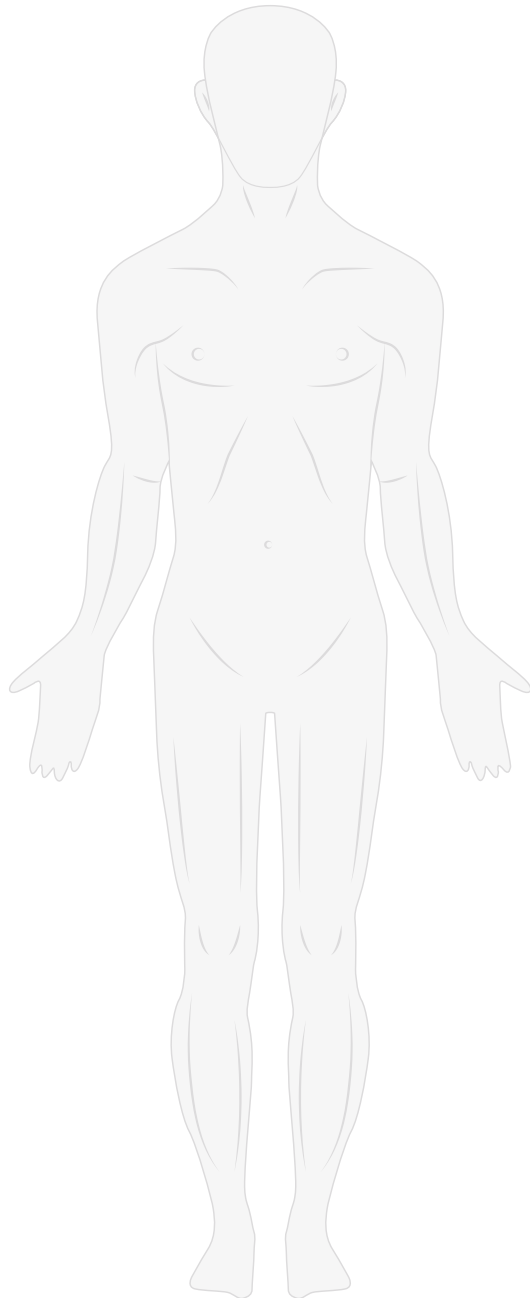


ACCESSORIES



Orfit offers an extensive range of accessories to increase the precision and comfort of your treatment.

Vacuum bags

Moldcare

Bolus material

Cyberknife full body cushion

Comfort cushions

Water bath

Digital dry-heat convection oven

Cleaning products

Storage solutions

Fixation devices



VACUUM BAGS

The combination of Orfit Vacuum Bag Cushions and Efficast High Precision Frameless masks enables you to achieve a highly customized immobilization of your patient with high precision, excellent reproducibility and great comfort for the patient.

The Orfit Vacuum Bags are more narrow and longer than conventional vacuum bags. This ensures a much more intimate contouring to the patient's anatomy. The head and neck bags are designed for specific use in combination with the Orfit 3D shaped Head Supports and the Orfit Hybrid masks to offer an unsurpassed high precision immobilization that limits patient movement to 1.5 mm and less.

The half body bags for adults and the paediatric bags have a narrow shape to easily fit on the All-in-One and SBRT base plate in combination with an Efficast thermoplastic mask.

The Orfit Vacuum Bags are made from radio-translucent materials that will provide artefact free image clarity with minimal beam attenuation.

A special coated nylon bag material in combination with the thin fill helps to ensure intimate mould definition.

The bags are easy to clean and are designed to withstand the rough handling conditions of a busy radiation oncology department.

A moulded Orfit Vacuum Bag will maintain its integrity during the course of treatment (up to six weeks), which ensures precise and reproducible patient positioning from imaging through the entire treatment process.

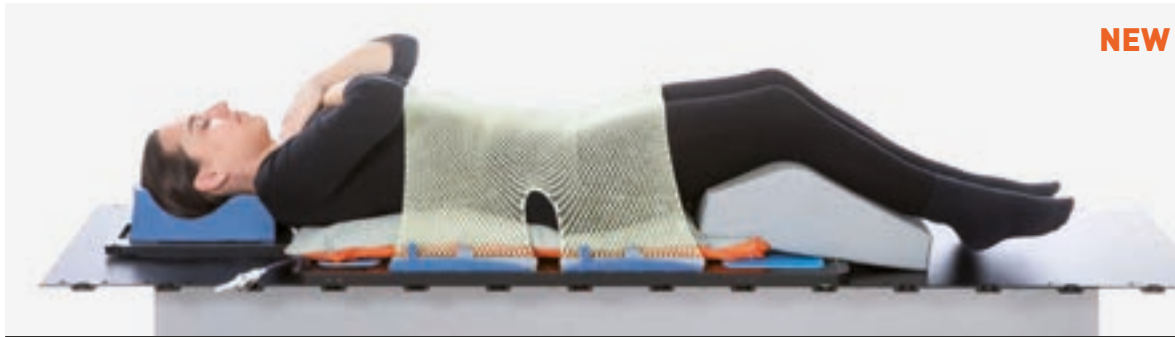
The Orfit vac bags are compatible for use with CT, MRI (when used with Orfit MRI compatible base plates), PET/CT, SPECT and Ultrasound imaging modalities.

The Orfit Vacuum Bag Cushion (VBC) System includes the following immobilization/positioning applications:

- > Custom individual patient head support: The small size Orfit bag (Art. N° 18055) when used in combination with the Orfit 3D Head Support enables you to create a custom head support mould that eliminates all gaps in the neck area while providing unmatched patient comfort.
- > Custom thoracic immobilization/positioning: The half-body Orfit bag (Art. N° 18056) is perfect when you need to create a customized thoracic immobilization. The half-body bag is compatible for use with the Orfit All-in-One Base Plate and SBRT Base Plates.
- > Custom paediatric CNS immobilization/positioning: The paediatric full body Orfit bag (Art. N° 18057) is designed specifically for CNS treatment.

VACUUM BAGS

CUSTOM TYPES



Art. N° 18209

AIO vacuum bag half body - adult

480 x 900 mm

16 liter



Art. N° 18210

AIO vacuum bag full body - paediatric

340 x 1240 mm

16 liter

VACUUM BAGS

CUSTOM TYPES



Art. N° 18208

Individual head support vacuum bag

200 x 450 mm

0.9 liter

ADDITIONAL VACUUM BAGS

Art. N°	Product description
18200	Vacuum bag 700 x 1825 mm / 50 liter
18201	Vacuum bag 1130 x 1375 mm / 51 liter / T-shape
18202	Vacuum bag 850 x 1825 mm / 75 liter
18203	Vacuum bag 900 x 2325 mm / 117 liter
18204	Vacuum bag 700 x 1625 mm / 45 liter
18205	Vacuum bag 750 x 1025 mm / 35 liter
18206	Vacuum bag 700 x 1625 mm / 58 liter
18207	Vacuum bag 850 x 1540 mm / 53 liter
18200/INDEX	Vacuum bag 700 x 1825 mm / 50 liter - indexed
18201/INDEX	Vacuum bag 1130 x 1375 mm / 51 liter / T-shape - indexed
18202/INDEX	Vacuum bag 850 x 1825 mm / 75 liter - indexed
18203/INDEX	Vacuum bag 900 x 2325 mm / 117 liter - indexed
18204/INDEX	Vacuum bag 700 x 1625 mm / 45 liter - indexed
18205/INDEX	Vacuum bag 750 x 1025 mm / 35 liter - indexed
18206/INDEX	Vacuum bag 700 x 1625 mm / 58 liter - indexed
18207/INDEX	Vacuum bag 850 x 1540 mm / 53 liter - indexed

VACUUM BAG ACCESSORIES

HOSES AND CONNECTORS



Art. N° 18097
Hose connector for hose ID4 + 5/32



Art. N° 18054
Transparent hose ID4 (2 meters)

SIDE PANELS FOR MOULDING



Art. N° 32030
Side panels for individual cushions (4 pcs.)

PUMPS



Art. N° 18058
Vacuum pump with hose,
hose connector and cable



Art. N° 18076
High capacity vacuum pump with hose,
hose connector and cable

Art. N°	Voltage	Country
18058/230EU	230	EU
18058/230UK	230	UK
18058/230CH	230	CH
18058/100J	100	J
18058/115	115	US
18076/230EU	230	EU
18076/230UK	230	UK
18076/230CH	230	CH
18076/100J	100	J
18076/115	115	US

VACUUM BAG ACCESSORIES

INDEXING DEVICES

You can easily index the vacuum bags directly to the couch top using a 2-pin bar.



Art. N° 18059
Indexing bar (1pc.)

The arm rest adapter provides increased comfort and support by ensuring a smooth transition from thorax to shoulders and arms.



Art. N° 29036
AIO arm rest adapter for use with vacuum bag



The indexing bar can be used in combination with a 2-pin bar or an Orfit base plate

MOLDCARE*



Art. N° 18090
15 cm x 20 cm



Art. N° 18091
20 cm x 25 cm



Art. N° 18092
20 cm x 45 cm



Art. N° 18094
Moldcare cushion type S



* Moldcare is a trademark from ALCARE

BOLUS MATERIAL

The thermoplastic bolus material, which is available in sheets and pellets, is a specially formulated, rigid thermoplastic with a low melting temperature. It is very easy to mould and can be placed on thermoplastic masks. After heating, it also sticks to itself, which makes it possible to make thicker bolus sheets if needed.

SHEETS BEIGE



Art. N° 8336.S01/R/53
10 cm x 10 cm x 5 mm



Art. N° 8336.S01/R/58
15 cm x 15 cm x 5 mm



Art. N° 8336.S01/R/59
20 cm x 20 cm x 5 mm



Art. N° 8336.S01/R/60
30 cm x 30 cm x 5 mm



Art. N° 8333.S01/R
45 cm x 60 cm x 2 mm

BOLUS MATERIAL

SHEETS BEIGE



Art. N° 8336.S01/R/53 - 1 CM
10 cm x 10 cm x 10 mm



Art. N° 8336.S01/R/58 - 1 CM
15 cm x 15 cm x 10 mm



Art. N° 8336.S01/R/59 - 1 CM
20 cm x 20 cm x 10 mm



Art. N° 8336.S01/R/60 - 1 CM
30 cm x 30 cm x 10 mm

BOLUS MATERIAL

SHEETS WHITE



Art. N° 8313N.S01/R

22.5 cm x 20 cm x 2 mm



Art. N° 8333N.S01/R

45 cm x 60 cm x 2 mm

PELLETS



Art. N° 703011/1

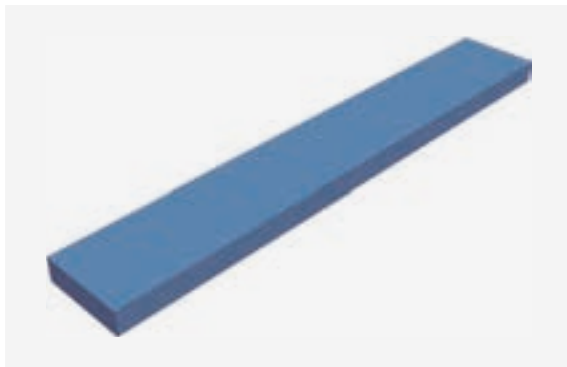
Bag of 500g

CYBERKNIFE FULL BODY CUSHION

The full body cushion for the Cyberknife Couch Top is designed for spinal and thorax treatment. The patient is positioned supine on the cushion with the arms along the side of the body.

Due to the narrow width of the cushion, the arms will be positioned next to the cushion on the treatment table, instead of on top of the cushion.

This allows the use of lateral fields to radiate the spine and thorax without the arms being located in the treatment field.



Art. N° 32118

Cyberknife full body cushion



COMFORT CUSHIONS



COMFORT CUSHIONS

PATIENT SUPPORT CUSHIONS



Art. N° 32005/2-V2
Trunkal cushion
800 x 400 x 20 mm



Art. N° 32005/4-V2
Small block
200 x 200 x 40 mm



Art. N° 32005/5-V2
Medium block
200 x 200 x 60 mm



Art. N° 32005/6-V2
Large block
200 x 200 x 100 mm



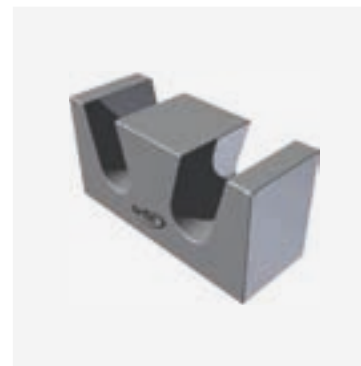
Art. N° 32005/8-V2
Wide wedge
400 x 250 x 100 mm
19.8°



Art. N° 32005/8A-V2
Small wedge
200 x 250 x 100 mm
19.8°



Art. N° 32005/10-V2
Leg support
400 x 400 mm



Art. N° 32005/11-V2
Foot support
400 x 150 x 200 mm

COMFORT CUSHIONS

PATIENT SUPPORT CUSHIONS



Art. N° 32005/14-V2

Cylindrical

knee support

544 x D200 mm

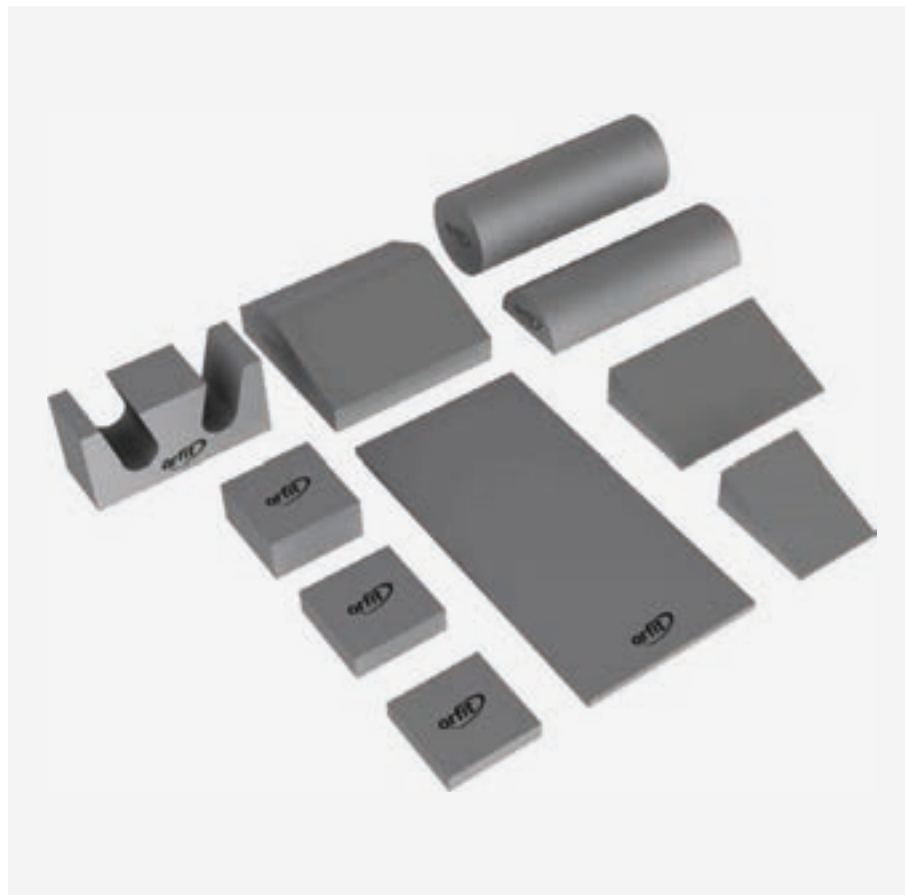


Art. N° 32005/15-V2

Half cylindrical

knee support

544 x R100/50 mm



Art. N° 32006-V2

Set of 10 comfort cushions

Use in combination
with our standard
products to increase
patient comfort.

WATER BATH

FEATURES AND BENEFITS

Extra-large to fit every size of mask (inner dimensions: 74cm x 54.5cm x 9.5cm).

A grill to lift the mask out of the water without putting your hands in the water.

A built-in thermometer (°C and °F) that indicates when the water has reached the target temperature.

A built-in timer.

Easy to empty with a tap on the side.

Available in 115V and 230V.



Art. N°	Voltage	Region/Country
35097/115/1400	115	US
35097/230/1400	230	EU
35097/230/1400/UK	230	UK



Art. N° 35097/RE
Cleaning product for water bath
500 ml

DIGITAL DRY-HEAT CONVECTION OVEN

FEATURES AND BENEFITS

Two large grid platforms for heating multiple masks at the same time.

All sizes of Orfit masks fit in the oven, including the largest head, neck and shoulders masks and extra-cranial masks (inner dimensions: 700 x 570 x 240 mm)

Multi-functional digital touch screen with build-in timer.

Art. N°	Voltage	Region/Country
35118/230EU	230	EU
35118/230UK	230	UK
35118/120US	120	US



CLEANING PRODUCTS



Art. N° 32836

Aniospray Quick
(3 bottles and 1 atomizer)



Art. N° 32837

Wip'anhos Excel package (100 wipes)

These spray and wet wipes cleaning products are suitable for cleaning of Orfit immobilization devices.

STORAGE SOLUTIONS



Art. N° 32044
Storage stand for base plates



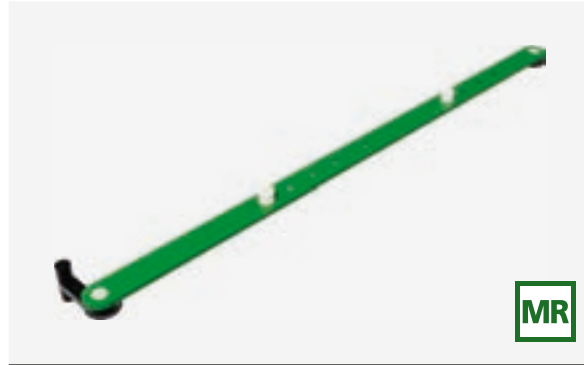
Art. N° 29099
Wall mount storage stand for base plates

FIXATION DEVICES

Other fixation devices can be found on www.orfit.com



Art. N° 32154
2-pin indexing bar for Exact* couches



Art. N° 32166
2-pin indexing bar for Exact* couches



Art. N° 32191
2-pin indexing bar for iBEAM* couches



Art. N° 32165
2-pin indexing bar for Prodigy couches - 53 cm



Art. N° 32208
2-pin indexing bar for Prodigy 2 couch - 53 cm



Art. N° 32190
2-pin indexing bar for Pinpoint couches - 50 cm

*Exact is a trademark of VARIAN Medical Systems Inc. / *iBEAM is a trademark of Medical Intelligence